



(Figure shows the right-hand-type)

BRAKE SHOE LIBO 1F

For grooved and embedded rails. One-fishing type with long blade. The laterally mounted spring gives a safe hold on the rails. Right-hand or left-hand type.
Approx. 7,6 kg/unit

Art. no. 100107 right-hand type

Art. no. 100108 left-hand type

TOP SAFETY BRAKE SHOE

The Top Safety Brake Shoe (Spisi) is used to secure wagons or group of waggons against runaway into the turnout area. The brake shoe must be employed in a way that the guide beat of the brake shoe is in linewith the gauge side of the rail leading to the built-up trog.

Approx. 9 kg/unit

Art. no. 100110 right-hand type

Art. no. 100111 left-hand type



(Figure shows the left-hand-type)



(Figure shows the right-hand-type)





Clearance of soles (sole width) 75 mm



BRAKE SHOE LIBO 2/S49

Standardized brake shoe of the German Federal Railways, Deutsche Bahn AG, two-fishing type with continuous blade, dimensions and steel quality in accordance with specifications of the German Federal Railways. For rails S41, S49, and S54.

Approx. 8 kg/unit

Art. no. 100211



Clearance of soles (sole width) 78 mm

BRAKE SHOE LIBO 2/F8

Standardized brake shoe of the German Federal Railways, Deutsche Bahn AG, two-fishing type with continuous blade, dimensions and steel quality in accordance with specifications of the German Federal Railways. For rails S8, S15, and UIC 604.

Approx. 8 kg/unit

Art. no. 100208



Clearance of soles (sole width) 66mm

BRAKE SHOE 2/F6

Standardized brake shoe of the German Federal Railways. Deutsche Bahn AG, two-fishing type with continuous blade. For rails S6, S30 und S33.

Approx. 8 kg/unit

Art. no. 100205

BRAKE SHOE LIBO 2 V

Similar to the standardized brake shoe, but with a reinforced chock. Dimensions and steel quality in accordance with specifications of the German Federal Railways. For heavy loads and strain.

Approx. 8.75 kg/unit

Art. no. 100206 / Form 6

Art. no. 100209 / Form 8, UIC 60

Art. no. 100212 / S49



LIBO 2 V / S49

BRAKE SHOE LIBO 2 M (without Figure)

Like Brake Shoe LiBo 2 V plus additionally with an adhesive magnet (adhesive force approx. 600 N).

Approx. 9 kg/unit

Art. no. 100207 / Form 6

Art. no. 100210 / Form 8, UIC 60

Art. no. 100213 / S49



(Figure shows the right-hand-type)

BRAKE SHOE LIBO I

For grooved emedded rails. One-fishing type with long blade. Right-hand or left-hand type.

Approx. 7.5 kg/unit

Art. no. 100101 right-hand type

Art. no. 100102 left-hand type

BRAKE SHOE LIBO I S

For grooved and embedded rails. One-fishing type with long blade. The welded-on thrust block gives a safe hold on the rails.

Approx. 8,5 kg/unit

Art. no. 100103 right-hand type

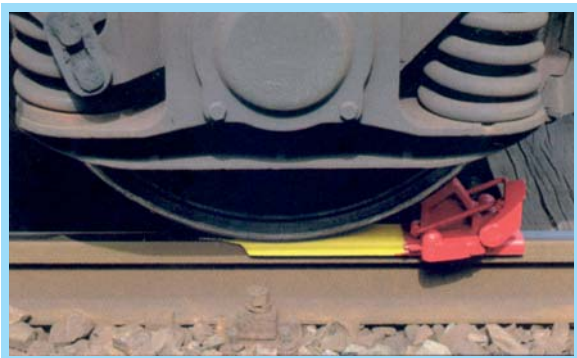
Art. no. 100104 left-hand type



(Figure shows the left-hand-type)



(Figure shows the right-hand-type)



This Brake Shoe is especially suited for arresting and releasing single or groups of waggons on falling gradient tracks without the help of a loc, and also to divide trains at a random position. It is not designed for the employment of e.g. breakage or target breakage of single or groups of waggons.

BRAKE SHOE LIBO 2 SB

The waggon run onto the brake shoe is freed by releasing the safety bolt.

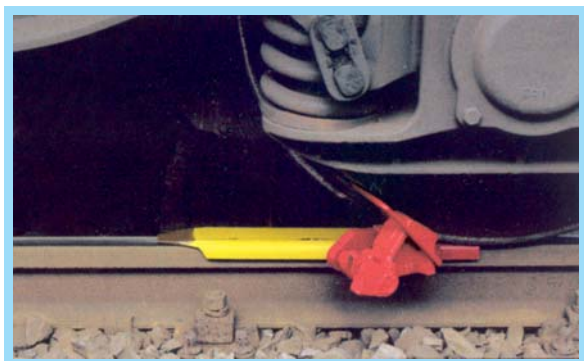
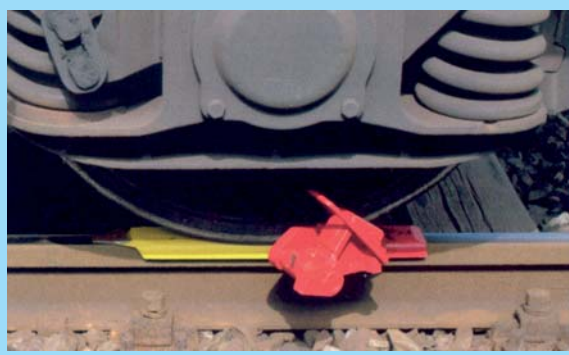
Upon lateral turning of the block the waggon runs on and releases the blade. The brake shoe falls off the rails section-free.

Afterwards the brake shoe is latched and can be used again.

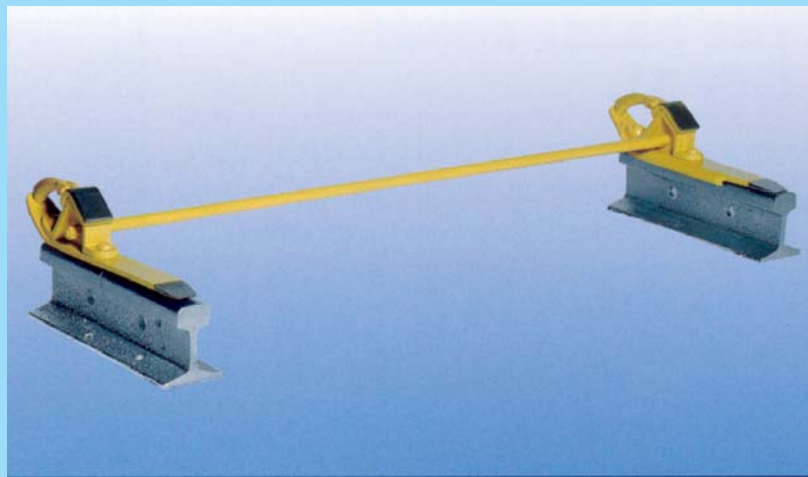
Approx. 7.5 kg/unit

Art. no. 100243 right-hand type

Art. no. 100244 left-hand type



TWO BRAKE SHOE



TWO BRAKE SHOE LIBO 21

Consists of 2 one-fishing brake shoes connected with each other by a threaded rod and steel tube. For all merchantable Vignol and grooved rails.

Approx. 20 kg/unit

Art. no. 100121

TWO BRAKE SHOE LIBO 22

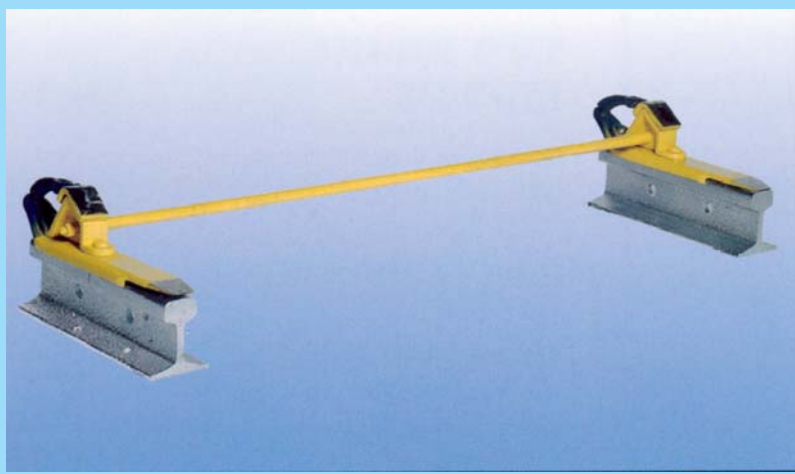
Consists of 2 one-fishing brake shoes connected with each other by a threaded rod and steel tube. For all merchantable Vignol and grooved rails. Can be delivered for forms 6, 8 und S 49.

Approx. 21 kg/unit

Art. no. 100220 / Form 6

Art. no. 100221 / Form 8

Art. no. 100222 / S 49



LIBO 22 / S49

PUSH POLE FOR WAGGONS



PUSH POLE FOR WAGGONS

with lateral hinge motion, thus providing a handling when standing outside the rails. With wooden pole and milled cleat. Greatest possible feed.

Approx. 18 kg/unit

Art. no. 100010





DOUBLE-SIDED RERAILING SHOES

For railing of derailed wagons and locomotives.

No kipping of the rerailing devices during the rerailing process as the shoes with their sidings will be fastend at the sleeper.

Most simply method of employment, even to be used by untrained personnel.

Rerailing time a few minutes only when using the devices in pairs. Cast steel manufactured.



Libo 15 for standard railways with a heavy waggon fleet.
Weight 150 kgs./pair approx.

Art. no. 100002

Libo 15 A for small and private railroads with a light waggon fleet.
Weight 70 kgs./pair approx.

Art. no. 100003

Libo 15 C für light and mine railways.
Weight 35 kgs./pair approx.

Art. no. 100004

